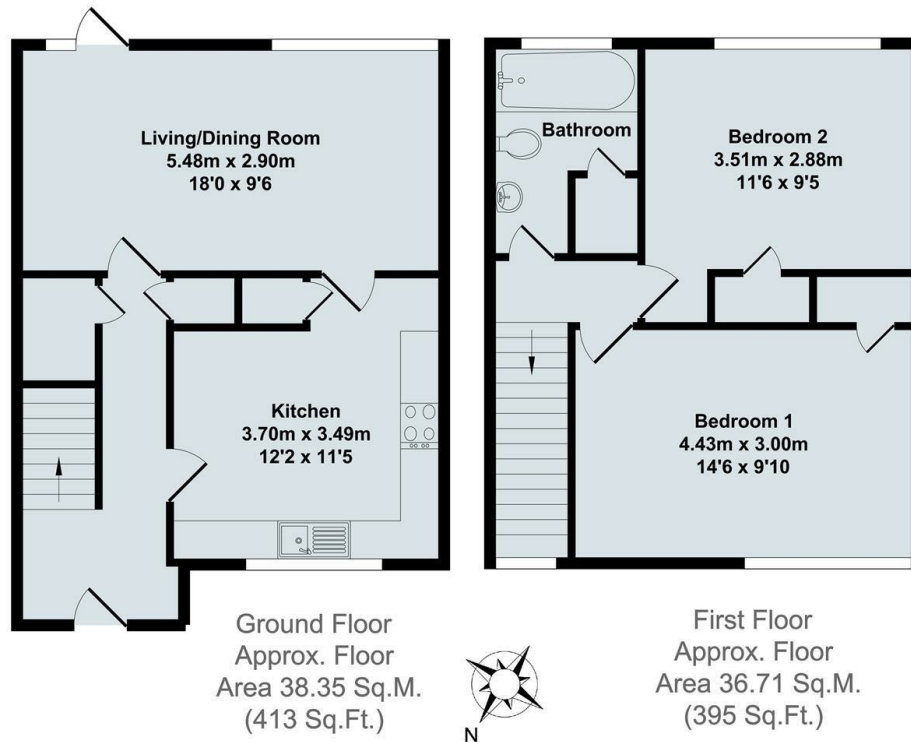




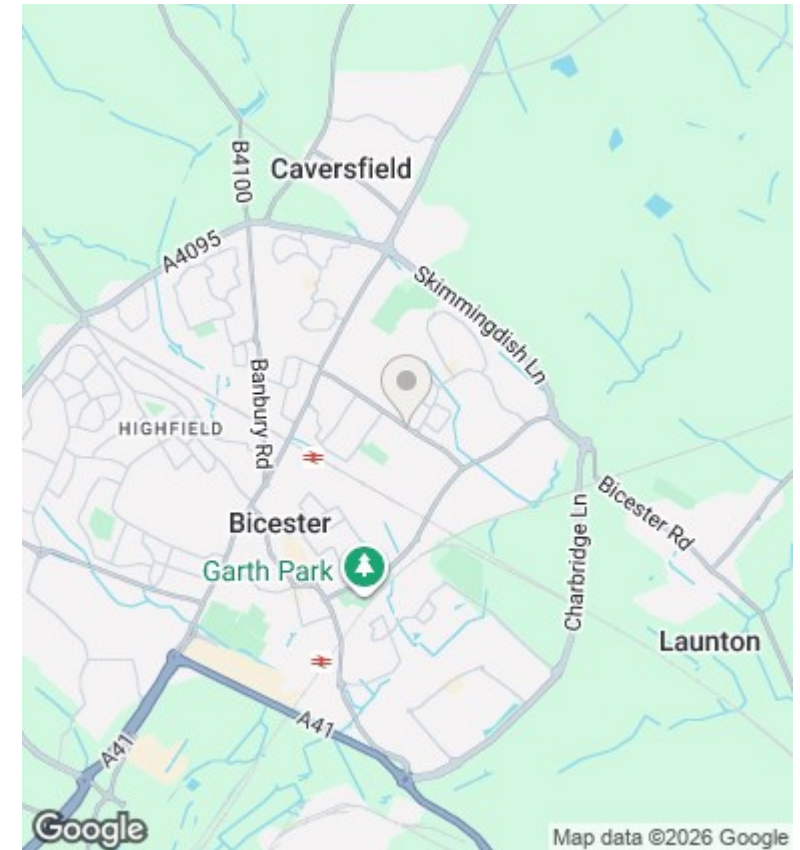
8 Bristol Road, Bicester, OX26 4UQ

£1,350 PCM - 8th August 2026.

- Two bedroom mid terrace house
- Rear garden with shed included
- EPC rating C
- Available unfurnished
- Gas CH
- Council Tax Band B
- Whitegoods included
- Carport and off street parking
- Mains gas electricity and water



Total Approx. Floor Area 75.06 Sq.M. (808 Sq.Ft.)



Directions

Viewings

Viewings by arrangement only. Call 01869 226888 to make an appointment.

Council Tax Band

B

EPC Rating:

C

Energy Efficiency Rating		
	Current	Potential
Very energy efficient - lower running costs		
(92 plus) A		
(81-91) B		87
(69-80) C	74	
(55-68) D		
(39-54) E		
(21-38) F		
(1-20) G		
Not energy efficient - higher running costs		
England & Wales	EU Directive 2002/91/EC	